

## Proteins and Esterase Isozymes in Organophosphate Resistant Strains of Malaria Mosquitoduring the Developmental Stages

- *D.E.Gangadhar Rao.*  
Associate Professor,  
Govt. College for Women,  
Kolar.

### Abstract

The proteins and esterase isozymes from *Anopheles stephensi* were analyzed by polyacrylamide gel electrophoresis. Changes in proteins and esterase isozyme patterns during developmental stages were studied. A few specific protein hands were present especially in the third instar Larval stage. In most strains. Eggs showed only one esterase hand. During the larval development may bands were gradually formed and most anodal hands were lost upon pupation. The adults showed differences in intensity and mobility exhibiting sexual dimorphism. The protein and esterase isozyme patterns of organophosphate (fenthion, methyl parathion and malathion) resistant and susceptible strains during developmental stages were compared with the zymogram and relative mobility showed variation in the number of intensity of proteins and esterase bands in the resistant strains as compared to the susceptible strains. *Comp BiochemPhysiol*114C, 51-55, 1996.

**Key Words.** *Anopheles stephensi*, Organophosphate resistance, Electrophoresis, Proteins, Estense isozymes.

### Introduction

Though mosquitoes have developed resistance for various types of insecticidesorganophosphate (OP) chemicals such asfenthion, methyl parathion, and malathion are still being used fur control or malaria vectors, including *Anopheles stephensi*. The development of OP-insecticide resistance in *An. Sticpilet1Si* has been reported (17,21). Little information is available on electrophoretic changes of protein pattern in mosquitoes (15,16). The electrophoretic analysis of esterase's in relation to OP-insecticide resistance have been reported in few species of mosquitoes (7,8,9,11,14).

However, the studies are too preliminary on differences in protein and esterase isozymes associated with insecticide resistance in *An. stephensi*.

The present investigation deals with the changes in protein and esterase isozyme patterns during developmental stages of fenthion, methyl parathion and malathion resistant and susceptible strains of *An. stephensi*, by using polyacrylamide gel electrophoresis.

### Material and Methods

Several laboratory strains of *An. stephensi* were used in the experiment, (Table 1). The mosquitoes were cultured under controlled conditions at 25°C and 80% humidity. The females were blood fed on mice. The larval resistance /susceptibility tests were carried out (20).

The material used for electrophoretic study of *An. stephensi*'s esterase isozymes were eggs, individual third instar larva, pupa, freshly emerged adult male and female of an isofemale of each of the resistant (FR, PR, and MR) and susceptible (ps, and ms) strains. Individual pupae of each strain were isolated in test tubes and sex was determined after adults emerged. The material (in three replicates) was used for electrophoretic study of proteins and esterases using polyacrylamide gels (1.19). The reagents for preparation of gels were of analytical grade. The gels were casted in the form of slabs of 1.5mm thick using glass plates measuring 18x16 cms. the separating gel consisted of 7.5% (Acrylamide + Bisacrylamide) and 0.04M Tris-HCl, pH 8.8. The stacking gel was of 3% (Acrylamide + Bisacrylamide) and 0.01M Tris-HCl, pH 6.8. Ammonium persulphate (APS) was used as polymerizing agent in final concentration of 0.1% along with 0.01% N, N, N, N-Tetramethylethylenediamine (TEMED) as the catalyst. Electrophoresis was subjected in cold at 100 V in the stacking gel and 200 V in the separating gel, using 0.025 M Trisglycine buffer (pH 8.3) as tank buffer.

TABLE 1. *An. stephensi* strains used in the experiments.  
Organophosphate susceptible strains

Strain	Originally collected place	Year	LC <sub>50</sub> (insecticide)
fs	WG, Bangalore, India	1984	3.003 ppm (fen- thion)
ps	KOR, Bangalore, India	1984	0.06 ppm (methyl parathion)
ms	MSN, Bangalore, India	1984	0.15 ppm (mala- thion)
Organophosphate resistant strains			
Strain	Originally collected place	Year	LC <sub>50</sub> (insecticide)
FR	WG, Bangalore, India	1989	0.5 ppm (fen- thion)
PR	KOR, Bangalore, India	1989	1.4 ppm (methyl parathion)
MR	MSN, Bangalore, India	1989	9.33 ppm (mala- thion)

Strains: fs = fenethion susceptible, ms = malathion susceptible, ps = methyl parathion susceptible, PR = methyl parathion resistant, FR = fenethion resistant, MR = malathion resistant.

The gels were stained for proteins with 0.1% Coomassie Blue, dissolved in 10% acetic acid and 20% ethanol, for overnight. For staining the nonspecific esterases, the gels were incubated for 10 min in 0.1 M Sodium phosphate buffer (pH 7.0). The staining solution consisted of 20 mg alpha naphthyl acetate and 40 mg Fast Blue-RR (4-Benzoylamino-2,5-Dimethoxy-aniline) in 100 ml of sodium phosphate buffer (pH 7.0). The gels were destained in 10% acetic acid. The relative mobility (R<sub>m</sub>) for proteins and esterase bands with reference to known indicator dye were calculated using the formula: Distance moved by the Band/Distance moved by the marker dye.

## Results

The total protein content during each developmental stage of resistant (FR, PR, and MR) and susceptible (fs, ps, and ms) strains are presented in Fig.1. The protein content was found to be similar in fs, ps, and ms strains. Therefore, all these three strains were represented by a single susceptible "control." The protein content in resistant strains was found to be higher when compared to "control." The FR strain showed an increase of 33.80, 24.40, 13.14, 37.57, and 24.99% in protein content for eggs, larvae, pupae, adult males and females respectively, when compared to "control." Similarly, the PR strain showed an increase of 36.14, 20.67, 15.91, 33.26 and 21.22, whereas MR strain showed a minimum increase of 8.97, 7.06, 4.88, 7.54, and 1.66% for the above stages respectively.

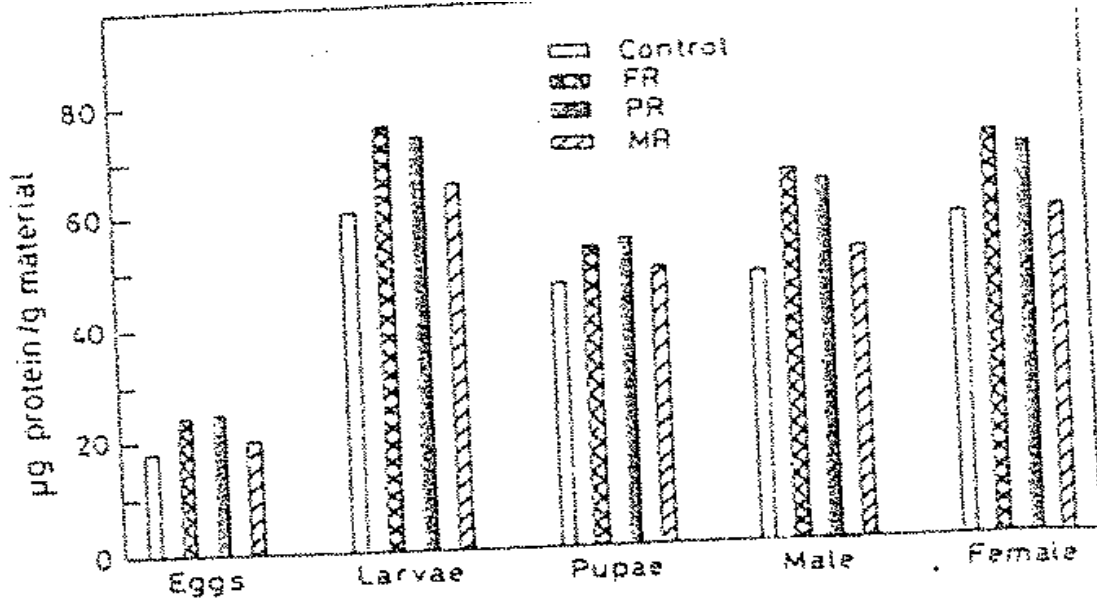


FIG. 1. Histogram showing quantitative changes of proteins during developmental stages of control (susceptible) and resistant strains for fenthion (FR), methyl parathion (PR) and malathion (MR) in *An. stephensi*.

The fs, ps, and ms strains showed similar protein bands and represented by a single susceptible “control.” The changes in protein pattern at different stages of development in resistant (FR, PR and MR) strains and control are computed in fig.2 Some of the protein bands were common among the control and the resistant strains which include six in eggs (2,5,6,7,8 and 12) one in larvae (15); five in pupae (4,5,10,14 and 17) six in males (3,5,6,11,14 and 17) and seven in females (2,7,9,11,14,16 and 17). Each resistant strain was characterized by a few specific bands especially in the larval stages. These bands include three (1,7, and 17) in FR strain; six (1,7,9,10,12 and 17) in PR strain and five (2,4,7,8 and 16) in MR strain, which were not observed in the control. There was no significant difference among the eggs, pupae and adult stages of the FR, PR and MR strains.

The nonspecific esterase isozyme patterns at different stages of development in resistant (FR, PR and MR) strains and control are computed in fig.3. the s, ps, and ms strains showed similar esterase bands and represented by a single susceptible “control.”

Some of the esterase bands were common in the control and resistant strains which include one in eggs (Est-5); two in larvae (Est-8 and 11); three in pupae (Est-2, 16 and 17). One in males (Est-9) and two in females (Est-4 and 14)

Several larval specific esterase bands in resistant strains include five (Est-2,6,7,13 and 14) in both FR and PR strains, whereas only one (Est-9) in the MR strain, when compared to the control. On the contrary, Est-10 in larvae; Est-12 in pupae and two (Est-2 and 16) in both males and females which was observed in the control were not expressed in the FR, PR and MR strains, presumably hydrolysed by the OP-insecticides.

The zymograms and relative mobility ( $R_m$ ) values of proteins and esterase isozymes during developmental stage for FR, PR and MR strains of *An.stephensi* are presented in fig.4. the  $R_m$  values showed variation in the 19 protein bands which ranged from 0.04 to 0.96. Similarly, the 17 esterase bands shoed R values from 0.18 to 0.78. However,  $R_m$  values of 0.40, 0.44,0.51,0.59 and 0.78 of protein bands (8,9,11,13) and 16, coincide with esterase bands (4,5,7,11 and 17) respectively.



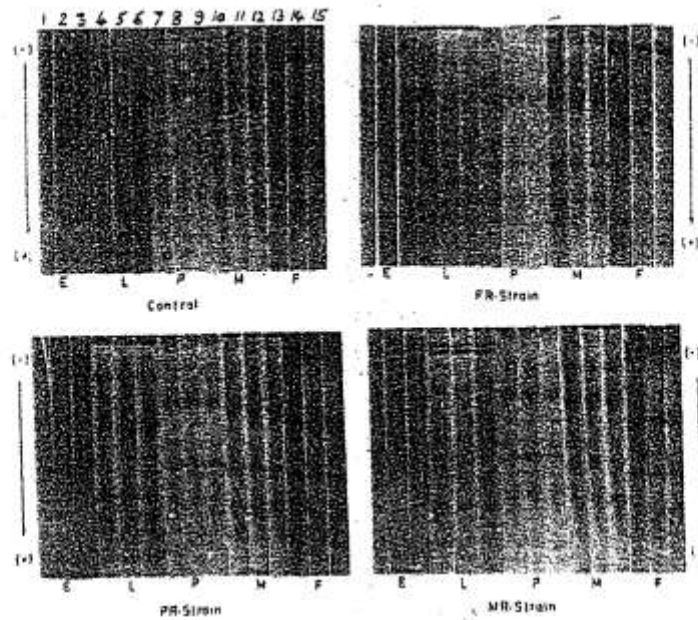


FIG. 2. Protein pattern during different developmental stages for control (susceptible) and resistant strains for fenthion (FR), methyl parathion (PR) and malathion (MR) in *An. stephensi*. Life cycle stages: E = eggs (channel 1-3), L = individual third instar larva (channel 4-6), P = individual pupa (channel 7-9), M = individual adult male (channel 10-12) and F = individual adult female (channel 13-15). In resistant strains, eggs showed maximum protein bands few specific larval bands most anodal bands disappear upon pupation and certain bands reappear during adult stage.

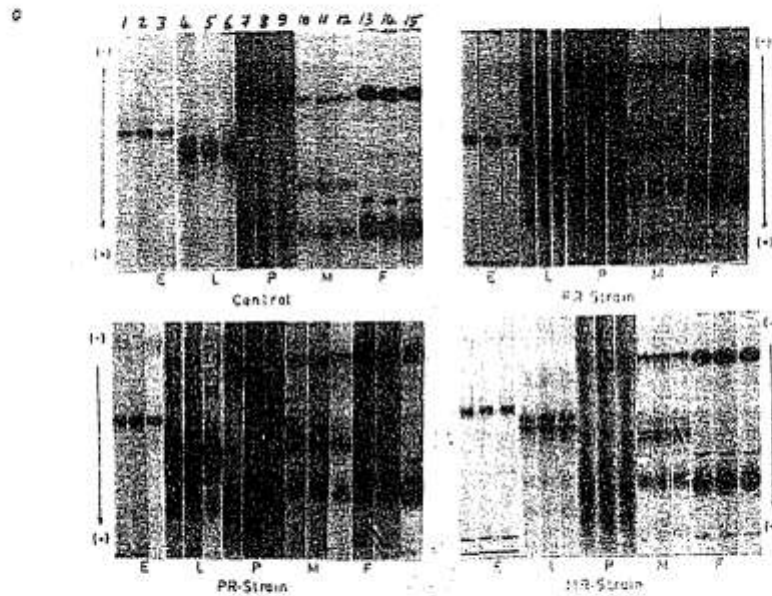
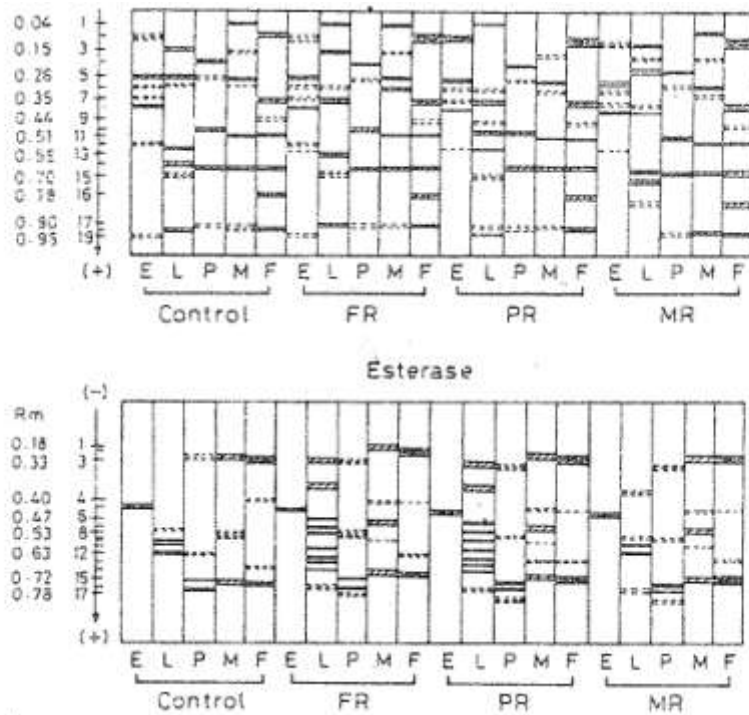


FIG. 3. Nonspecific esterases isozymes during different developmental stages for control (susceptible) and resistant strains for fenthion (FR), methyl parathion (PR) and malathion (MR) in *An. stephensi*. Life cycle stages: E = eggs (channel 1-3), L = individual third instar larva (channel 4-6), P = individual pupa (channel 7-9), M = individual adult male (channel 10-12) and F = individual adult female (channel 13-15). In all the strains, eggs showed one esterase band, whereas larvae showed several specific bands almost half the bands disappear at pupal stage. The adults showed difference in intensity and mobility of bands, exhibiting sexual dimorphism.



Rm values

Band	1	2	3	4	5	6	7	8	9	10	11	12	13	14	15	16	17	18	19
Protein	0.04	0.10	0.15	0.20	0.26	0.30	0.35	0.40	0.44	0.49	0.51	0.56	0.59	0.65	0.70	0.78	0.90	0.93	0.96
Esterase 1000/µg	0.18	0.22	0.33	0.40	0.44	0.47	0.51	0.53	0.55	0.58	0.59	0.63	0.66	0.68	0.72	0.74	0.78	-	-

FIG. 4. Schematic presentation of proteins and esterase zymograms of the susceptible (control) and the resistant strains for fenthion (FR), methyl parathion (PR) and malathion (MR) in *An. stephensi* (E = Eggs L = Larva (third instar) P = Pupa M = Male (adult) F = Female (adult)). Relative intensities of bands are indicated by shading. Rm = Relative mobility.

### Discussion

The quantity of total proteins among the resistant strains (FR, PR and MR) was found to be higher as compared to the control, during different stages of development. The eggs as well as third instar larvae showed maximum protein content, which declined in the pupal stage. The changes in protein content during metamorphosis reflects specific differences in protein synthesis. Release and uptake during pupation. The adult females showed higher protein content than males which may be related to specific protein for egg production (15).

Among the resistant strains, eggs showed maximum protein bands few specific larval bands; most anodal bands disappeared upon pupation and certain bands reappeared during adult stage. Several specific protein bands for the resistant strains include two in eggs (13 and 19) for FR strain four in larvae (9,10,12 and 18) in PR strain and four in larvae (2,4,8 and 16) in MR strain.

In the resistant strains, the eggs showed only one esterase band, whereas larvae showed maximum bands. Almost half the bands disappeared at pupal stage. The adults showed differences in intensity and mobility exhibiting sexual dimorphism.

The hydrolytic degradation of phosphates is both qualitatively and quantitatively the most important detoxification reaction in insects. The insecticidal activity of a phosphate is a function of the ratio of quantity of insecticide taken up to the amount hydrolyzed in a given period of time (2). The effect of malathion on the activity of detoxifying carboxylesterase has shown to be a major pathway for the degradation of organophosphates in insects. Whereas other OP-insecticides including fenthion and methyl parathion induce resistance due to phosphate detoxification (12)

### Conclusion

The toxicity of insecticides in mosquitoes is affected by numerous parameters including incomplete dominance to OP-insecticides like fenthion, methyl parathion and malathion (5,6); variation in egg production and egg hatchability (4); the time of application (18); efficacy of cellular detoxification enzymes (12) environmental factors (3) and gene-amplification of detoxifying esterases (13). However, the toxicity and fate of OP-insecticides reflecting cellular detoxification mechanism require further investigation.

This is the first report of electrophoretic study of proteins and esterases in OP-insecticide resistant and susceptible strains, especially to fenthion, methyl parathion and malathion, in *An. stephensi*.

### References:

- 1) Dais, B.J (1964) Disc electrophoresis II. Methods and application to human serum proteins. *Ann.N.Y Acad. Sci.*121:404-427.



- 2) Fest.C; Schmidr.K.J Organophosphorus insecticides, Buchl K.H. (ed). New York, Wiley Interscience.
- 3) Gangadhar Rao D.E. Shetty, N.J (1992) Effect of insecticide resistance on reproductive potential in Anopheles stephensi Liston. A malaria mosquito Int.JToxicol, Occup Environ. Hlth, 48-52.
- 4) Gangadhar Rao. D.E (1993) Genetical toxicological and biochemical studies on insecticide resistance of fenthion, methyl parathion and malathion in malaria mosquito, Anopheles stephensi Liston. Ph.D. Thesis, Bangalore University, Bangalore, India.
- 5) Gangadhar Rao D.E, Shetty N.J (1994) Genetic study of malathion resistance in Anopheles stephensi.J. CytolCenet. 29:215-219.
- 6) World Health Organization (1981) Instructions for determining susceptibility or resistance of mosquito larvae to insecticides Tech Rep Scr. 907.